

State of Wyoming Corner Record

(In compliance with the *CORNER PERPETUATION AND FILING ACT*, Wyoming Statutes, 1997 Section 33-29-140 et. se., and the Rules and Regulations of the Board of Professional Engineers and Professional Land Surveyors)

Reverse side of this form may be used if more space is needed.

Record of original survey and citation of source of historical information (if corner is lost or obliterated). Description of corner monumentation evidence found and/or monument and accessories established to perpetuate the location of this corner. Sketch of relative location of monument, accessories, and reference points with course and distance to adjacent corner(s) (if determined in this survey). Method and rationale for re-establishment of lost or obliterated corner.

RECORD: G.L.O. survey by J. Wesley Hammond in 1873 "80.00 a Sandstone 18x10x6 set 11 inches deep marked 3 notches on South and 3 notches on North."

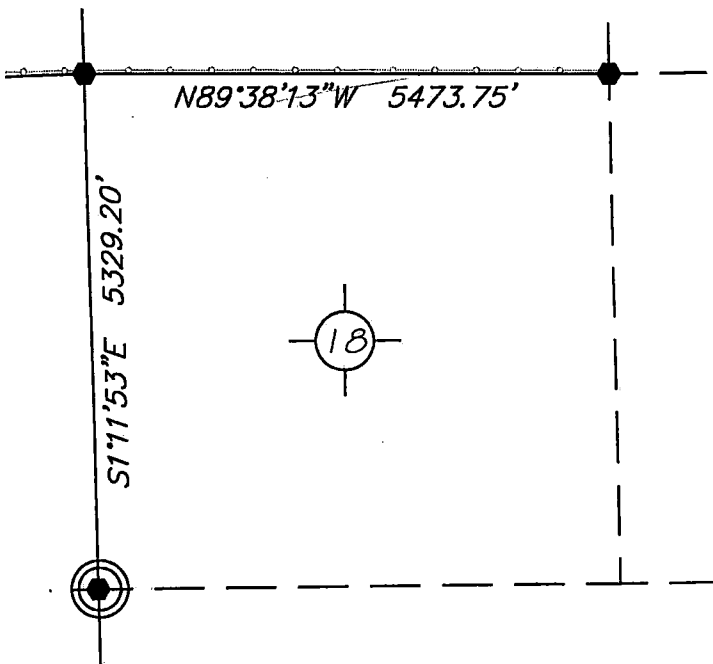
FOUND: nothing found, falls in county road intersection. Used mean road edges to determine centerline of road intersection for re-establish position.

Re-monumentation: set 2.5" aluminum cap on 3/4x30 inch rebar with cap is 0.4 feet below road surface w/ P-K nail and washer reference points.

NAD83, position:

Point #	North	East	Elev.
1761242	341663.41	940042.15	5400.14

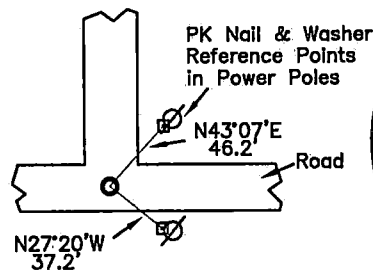
NOTE:
BEARINGS AND DISTANCES SHOWN HEREON ARE BASED UPON GRID USING NAD83 WYOMING EAST ZONE AND TRIMBLE R8 GPS OBSERVATION



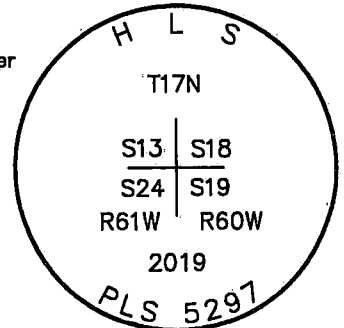
Monument Location

corner referenced this record =

SKETCH



LARAMIE COUNTY



Monument Inscription

Date of Field Work: May 11, 2019

Office Reference: DRG-21836, Pt.1761242

Cross Index Plat

	1	2	3	4	5	6	7	8	9	10	11	12	13	14	15	16	17	18	19	20	21	22	23	24	25	
A	+	+	+	+	+	+	+	+	+	+	+	+	+	+	+	+	+	+	+	+	+	+	+	+	+	A
B	+	+	+	+	+	+	+	+	+	+	+	+	+	+	+	+	+	+	+	+	+	+	+	+	+	B
C	6	5	4	3	2	1	+	+	+	+	+	+	+	+	+	+	+	+	+	+	+	+	+	+	C	
D	+	+	+	+	+	+	+	+	+	+	+	+	+	+	+	+	+	+	+	+	+	+	+	+	D	
E	+	+	+	+	+	+	+	+	+	+	+	+	+	+	+	+	+	+	+	+	+	+	+	+	E	
F	+	+	+	+	+	+	+	+	+	+	+	+	+	+	+	+	+	+	+	+	+	+	+	+	F	
G	7	8	9	10	11	12	+	+	+	+	+	+	+	+	+	+	+	+	+	+	+	+	+	+	G	
H	+	+	+	+	+	+	+	+	+	+	+	+	+	+	+	+	+	+	+	+	+	+	+	+	H	
J	+	+	+	+	+	+	+	+	+	+	+	+	+	+	+	+	+	+	+	+	+	+	+	+	J	
K	+	+	+	+	+	+	+	+	+	+	+	+	+	+	+	+	+	+	+	+	+	+	+	+	K	
L	18	17	16	15	14	13	+	+	+	+	+	+	+	+	+	+	+	+	+	+	+	+	+	+	L	
M	+	+	+	+	+	+	+	+	+	+	+	+	+	+	+	+	+	+	+	+	+	+	+	+	M	
N	+	+	+	+	+	+	+	+	+	+	+	+	+	+	+	+	+	+	+	+	+	+	+	+	N	
O	+	+	+	+	+	+	+	+	+	+	+	+	+	+	+	+	+	+	+	+	+	+	+	+	O	
P	19	20	21	22	23	24	+	+	+	+	+	+	+	+	+	+	+	+	+	+	+	+	+	+	P	
Q	+	+	+	+	+	+	+	+	+	+	+	+	+	+	+	+	+	+	+	+	+	+	+	+	Q	
R	+	+	+	+	+	+	+	+	+	+	+	+	+	+	+	+	+	+	+	+	+	+	+	+	R	
S	+	+	+	+	+	+	+	+	+	+	+	+	+	+	+	+	+	+	+	+	+	+	+	+	S	
T	30	29	28	27	26	25	+	+	+	+	+	+	+	+	+	+	+	+	+	+	+	+	+	+	T	
U	+	+	+	+	+	+	+	+	+	+	+	+	+	+	+	+	+	+	+	+	+	+	+	+	U	
V	+	+	+	+	+	+	+	+	+	+	+	+	+	+	+	+	+	+	+	+	+	+	+	+	V	
W	+	+	+	+	+	+	+	+	+	+	+	+	+	+	+	+	+	+	+	+	+	+	+	+	W	
X	31	32	33	34	35	36	+	+	+	+	+	+	+	+	+	+	+	+	+	+	+	+	+	+	X	
Y	+	+	+	+	+	+	+	+	+	+	+	+	+	+	+	+	+	+	+	+	+	+	+	+	Y	
Z	+	+	+	+	+	+	+	+	+	+	+	+	+	+	+	+	+	+	+	+	+	+	+	+	Z	

Firm/Agency, Address

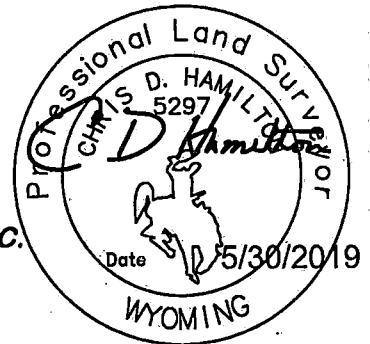
this corner record provided by:

**HAMILTON
LAND
SURVEYING**

UNDER CONTRACT TO:

DRG **RIFFIN & ASSOCIATES, INC.**
1414 ELK ST., SUITE 202
ROCK SPRINGS, WY 82901
(307) 362-5028

This corner record was prepared by me or under my direction and supervision.
SEAL & SIGNATURE



RECP #: 753757

RECORDED 5/23/2019 AT 10:14 AM BK# 2622 PG# 1571

Debra K. Lee, CLERK OF LARAMIE COUNTY, WY PAGE 1 OF 1

Debra Lee _____ Deputy

County Clerk

STATE of WYOMING, Office of Clerk & Recorder, County of Laramie

this block provided for county filing documentation

Corner Name: Southwest , Section: 18 , T 17N , R 60W , 6th P.M. , Cross-Index No.: N-01

SBRPEPLS/PLSW: March 1994; PLSW January 1998

County: LARAMIE , Wyoming